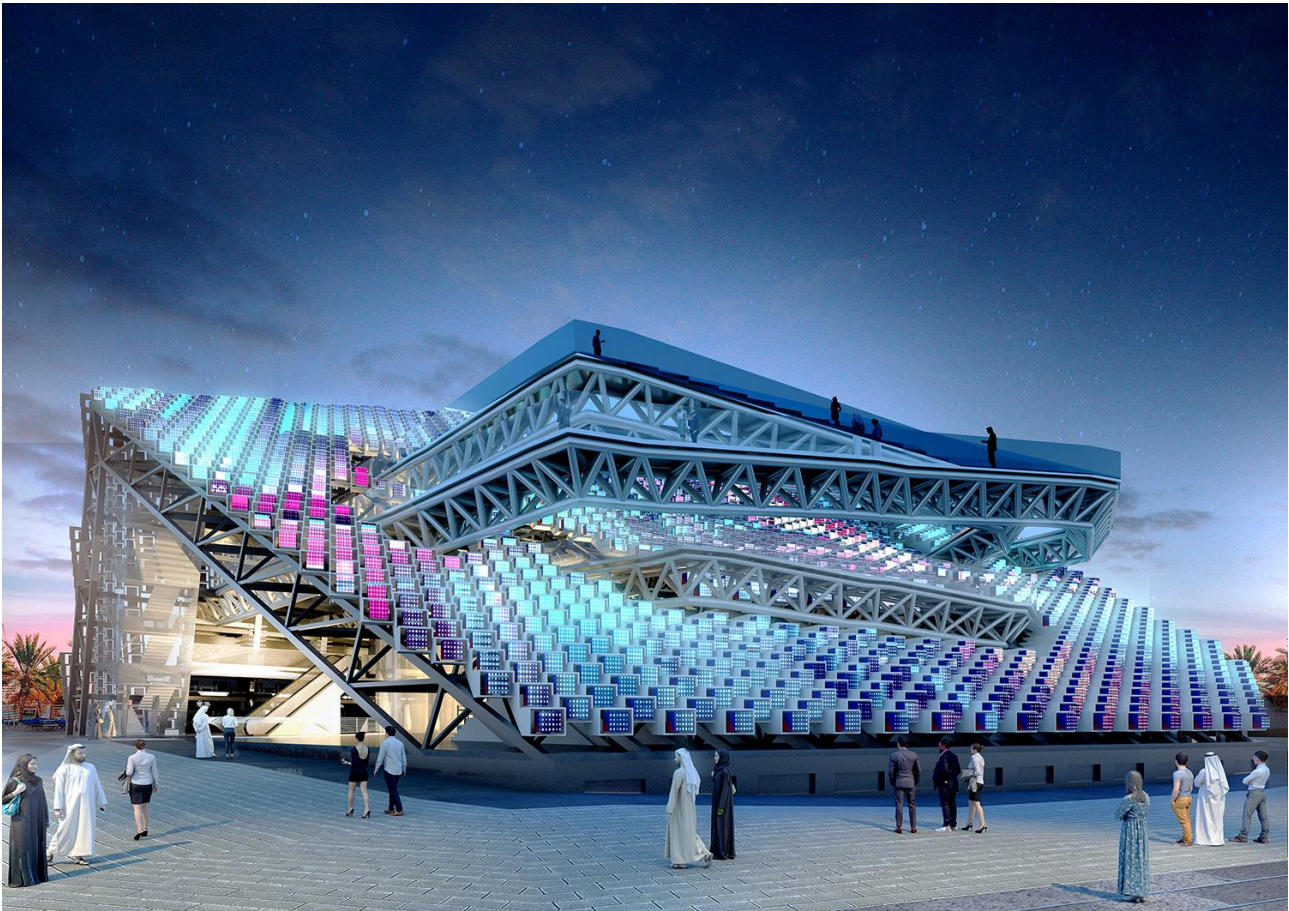


The Korea Pavilion at Expo 2020 Dubai chooses Hanwha Techwin to secure safety of its visitors



“The safety and security of our visitors and staff is always our top priority. We have invested in the latest technology to secure video surveillance infrastructure to provide our security colleagues with a powerful tool which will allow them to respond quickly and effectively to any incidents.”

- Yoo Seok Ahn, Director of the Korea Pavilion

Challenge

Expo 2020 Dubai, the United Arab Emirates (UAE) taking place from 1 October 2021 to 31 March 2022 at the heart of Dubai’s business district Jebel Ali, is the first World Expo to be held in the Middle East and one of the world’s biggest in-person events with expected number of visitors reaching up to 25 million (159,000 per day, and up to 250,000 visitors). Representatives from 192 countries run their pavilions at the expo and the Korea Pavilion welcomes the world on the theme mobility, presenting future of mobility world with smarter and better connection.

Facilities with such number of visitors often confront minor security issues and in most cases, they are inevitable without proper security solutions. So to cope with such problem and secure safety of its staff

and visitors, the Korea Pavilion chose to install Hanwha Techwin's cameras and recording server. Apart from keeping safety of visitors, the Korea Pavilion wanted to gather visitors' behavioral data to further improve visitors' experience.



Solution

The Korea Pavilion wanted network-based, PoE (Powered over Ethernet) cameras with video analytics that could produce high-quality video and did not require licenses. They also wanted recording server with the effective VMS that would give them reliable recording environment along with the visitors' statistical data. After investigating their options, the Korea Pavilion determined that working with Hanwha Techwin cameras and systems would be the best fit for their requirements. During the decision-making process, one of the deciding factors was that Hanwha Techwin is a "One vendor" meaning that it can provide end-to-end solutions ranging from cameras, recorders, VMS, peripherals and accessories. Building a reliable video surveillance system included the installation of several fisheye cameras and network IR dome and bullet cameras. The XNF-8010R 6MP fisheye camera provides up to 30fps at full resolution and are able to capture good quality images of a large area while giving insightful statistical data of visitors.

For building interiors and exteriors, they installed a variety of bullet and dome cameras, including the XNO-6080R and QNV-6072R. These cameras provide 2MP maximum resolution, 60fps and 30fps at all

resolutions respectively, motion detection, as well as tampering and defocus detection.



Result

The Korea Pavilion at Expo 2020 Dubai welcomes the world with over 130 Hanwha Techwin cameras and recorders. By implementing industry standard PoE, network-based cameras, the Korea Pavilion has realized significant savings with regards to installation and maintenance costs. The Korea Pavilion has also installed cameras to analyze visitors' behavior. This strategy has already helped the operation team to come up with the insightful statistical data, improving customers' overall experience.

“The safety and security of our visitors and staff is always our top priority. We have invested in the latest technology to secure video surveillance infrastructure to provide our security colleagues with a powerful tool which will allow them to respond quickly and effectively to any incidents.” said Yoo Seok Ahn, Director of the Korea Pavilion. “As well as being completely satisfied with the quality of the captured images, control room operators have said they are also impressed with how simple it is for them to take full advantage of the innovative functionality built into the cameras and VMS.”